

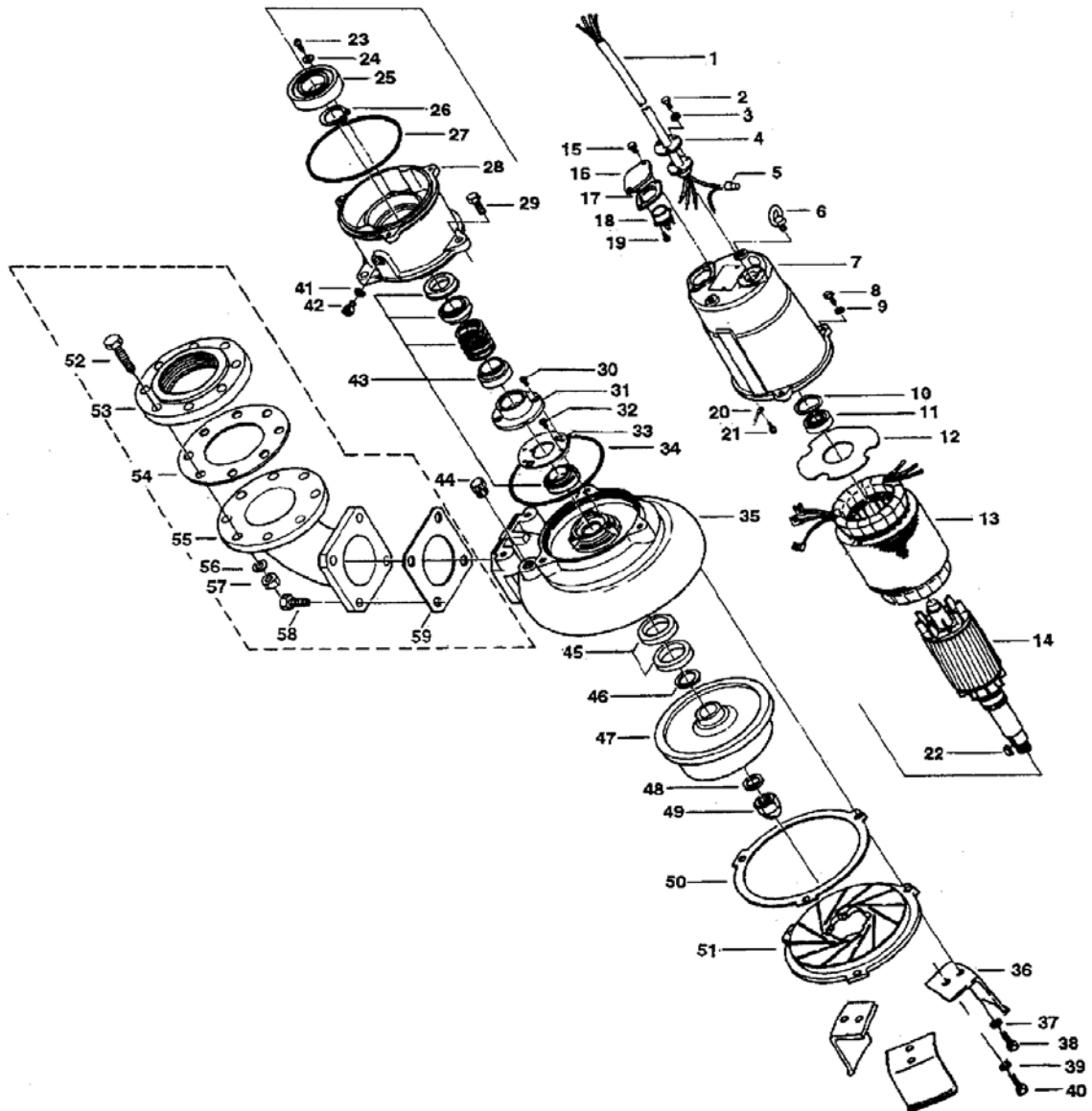
PARTS LIST		CONTRACTOR PUMPS			9/6/2013	
ITEM	PART No.	DESCRIPTION	QTY	SIZE	MATERIAL	NOTES
1	001-150-25	Cable w/Gland 32'	1	VCT4Cx3.5mm2	BE/CE	
2	140-021-17	Hex.Bolt	3	M5x20	SUS304	
3	142-422-18	Seal Washer	3	PM-5	SUS+NBR	
4	003-111-20	Gland	1		SUS304	
5	009-150-16	Terminal	4	8-SD	CU	
6	072-100-17	Eye Bolt	2	M10	SS	
7	064-514-13	Motor Frame	1		FC	
8	140-055-10	Hex.Bolt	3	M8x25	SUS304	
9	142-163-18	Spring Washer	3	M8	SUS304	
10	142-196-10	Wave Washer	1	#6205/6304	SK5	
11	052-188-17	Bearing (w/O-ring)	1	AC-6304ZZC3		
12	058-117-13	Lead Wire Protection Plate	1	d70xd140x1.6t	Resin	
13	056-670-13	Stator 220V-60HZ	1Set			
13	056-683-19	Stator 440V-60HZ	1Set			
14	055-731-10	Rotor	1Set	w/Bearing		
15	140-052-17	Hex.Bolt	2	M8x16	SUS304	
16	127-195-12	Protector Fixing Plate	1	22/37-BE2	SUS304	
17	121-446-13	Packing	1	22/37-BE2	NBR	*Included in Packing O-Ring Kit
18		Motor Protector				
18	053-478-10	Motor Protector 220V-60HZ	1	KA313-GGZL110	(T.C)	
18	053-420-17	Motor Protector 440/460/480V-60HZ	1	KA313-GCXL103	(T.C)	
19	143-126-12	Pan Screw (w/Spring Washer/Plain Washer)	2	M4x12	SWRM	
20	009-116-10	Terminal	1	R-2-4	CU	
21	143-124-10	Pan Screw (w/Spring Washer/Plain Washer)	1	M4x6	SWRM	
22	147-066-15	Impeller Key	1	10x8x22L	SUS420	
23	143-042-13	Pan Screw	3	M6x10	SWRM	
24	062-196-19	Bearing Fixing Washer	3	d8xd20.5x2.3t	SS	
25	052-112-10	Bearing	1	6309ZZC3		
26	146-027-11	Retaining Ring	1	C45	SK5	
27	122-333-19	O-Ring	1	170xd3.1	NBR	*Included in Packing O-Ring Kit
28	060-456-14	Bearing Housing	1		FC	
29	140-098-15	Hex.Bolt	3	M12x35	SUS304	
30	143-070-23	Pan Screw	2	M5x6	SWRM	
31	030-156-18	Oil Lifter	1	H-35(A)(T)	Resin	
32	143-070-10	Pan Screw	3	M5x6	SWRM	
33	030-150-12	Seal Stopper	1	H-35(A)(T)	SPCC	
34	122-246-14	O-Ring	1	180xd3.1	NBR	*Included in Packing O-Ring Kit
35	020-527-13	Pump Casing	1	37-BE2/CE2	FC	
36	023-469-15	Pump Stand	3	22/37-BE3	SPHC	
37	142-165-10	Spring Washer	3	M12	SUS304	
38	140-098-15	Hex.Bolt	3	M12x35	SUS304	
39	142-163-18	Spring Washer	3	M8	SUS304	
40	140-054-19	Hex.Bolt	3	M8x20	SUS304	
41	121-247-12	Packing	1	d12.3xd18x2t	PE	*Included in Packing O-Ring Kit

PARTS LIST		CONTRACTOR PUMPS			9/6/2013	
ITEM	PART No.	DESCRIPTION	QTY	SIZE	MATERIAL	NOTES
42	035-113-18	Oil Plug	1	M12x14	SUS304	
43	025-280-16	Mechanical Seal	1	H-35A	SiC+CCBN	
44	046-107-13	Air Release Valve	1	PT-1/2	Nylon	
45	026-000-01	Oil Seal	2	VC-58726	NBR	
46	040-113-14	Impeller Shim		d32.5xd48x0.3t	SUS304	
47	021-000-44	Impeller (60HZ)	1	100C43.7-CR-62	FC	
48	142-170-18	Spring Washer	1	M24	SUS304	
49	141-011-17	Hex.Nut	1	M24	SUS304	
50	120-104-13	Packing (S.Cover)		d230.5xd258x0.3t	M-Sheet	
51	022B4913	Suction Cover	1	22/37-CE3	HICR	
52	140-000-56	Hex.Bolt	8	M16x75	SWRM	
53	048-139-10	Screwed Flange	1	JIS10K(NPT-4")	FC	
54	121-106-34	Packing(For 100mm)	1	JIS10Kx100mm	NR	*Included in Packing O-Ring Kit
55	037-170-19	Discharge Bend(For 100mm)	1	80x100mm	FC	
56	142-166-37	Spring Washer	8	M16	SWRH	
57	141-008-11	Hex.Nut	8	M16	SUS304	
58	140-124-11	Hex.Bolt	4	M16x40	SUS304	
59	121-152-19	Packing	1	145mm2(P.C.145)	NBR	*Included in Packing O-Ring Kit
		<Packing O-Ring Set>				
	173-474-11	Packing O-Ring Set	1Set	(*)		
		Lubricant		Turbine Oil#32 1.300ml		

PARTS LIST		CONTRACTOR PUMPS				9/6/2013
ITEM	PART No.	DESCRIPTION	QTY	SIZE	MATERIAL	NOTES

EXPLODED VIEW

100C43.7-52/62



C-00486-1