

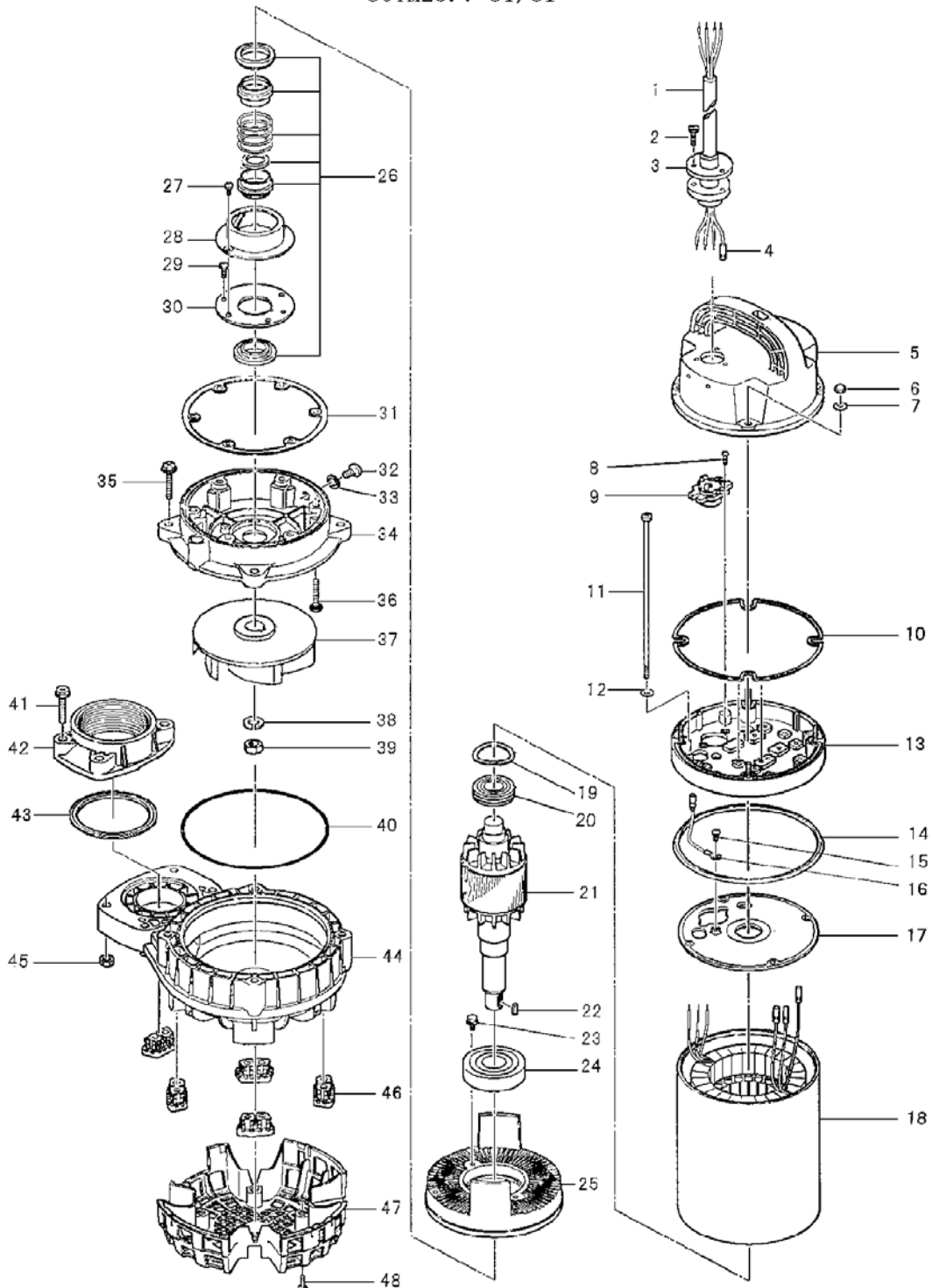
PARTS LIST		TITANIUM VANCS PUMP			1/13/2020	
ITEM	PART No.	DESCRIPTION	QTY	SIZE	MATERIAL	NOTES
1	001-007-18	Cabtyre Cable Set (32') 220V-60Hz	1	VCT4Cx3.5mm2	TM(40)	
2	143-000-53	Hex.Tapping Screw	3	M5x25	Titanium	
3	003-000-27	Gland	1	BECE(P.C.40)	Titanium	
4	009-275-18	Compression type Terminal	4	TGNB-5.5 (Insulated)	CU	
5	051-000-41	Motor Head Cover	1		Resin	
6	141-004-75	Hex.Nut	4	M6	Titanium	
7	142-000-67	Plain Washer	4	M6(d6.5xd13x1t)	Titanium	
8	143-138-17	Truss Tapping Screw	2	M4x12	SWCH	
9	053-001-72	Motor Protector 220V-60Hz	1	KA313-GGXL110	(T)	
	053-001-71	Motor Protector 440V-60Hz	1	KA313-GDXL110	(T)	
10	121-001-22	Packing	1	d169xd176x3.1t(P.C.160)	NBR	*
11	143-000-48	Pan Screw	4	M6x250L(20L)	SWRM	
12	142-113-26	Plain Washer	4	M6(D=11.5)	SPC	
13	082-000-03	Head Cover Spacer	1		Resin	
14	121-001-23	Packing	1	VK(T)-22/37(A)T(W)	NBR	*
15	143-085-34	Pan Screw (w/Spring Washer)	1	M4x6	C3604	
16	009-001-09	Earth Terminal	1Set	2mm2x260L		
17	050-000-63	Motor Bracket	1		ADC	
18	056-006-59	Stator (w/M.Frame) 220V-60Hz	1Set			
	056-006-61	Stator (w/M.Frame) 440V-60Hz	1Set			
19	142-000-75	Wave Washer	1	BBA0630300A0,T=0.3	SUP	
20	052-187-16	Bearing (w/O-ring)	1	AC-6204ZZC3		
21	055-002-16	Rotor	1Set	w/Bearing		
22	147-000-44	Impeller Key	1	5x5x18.5L	Titanium	
23	140-000-06	Hex.Bolt (w/Spring Washer/Plain Washer)	2	M6x12	SWCH	
24	052-109-14	Bearing	1	6306ZZC3		
25	060-001-16	Bearing Housing	1		ADC	
26	025-000-43	Mechanical Seal	1	H-25AT	SIC	
	025-188-13	Mechanical Seal VITON	1	X-25W	VITON	OPTIONAL VITON
27	143-070-23	Pan Screw	2	M5x6	SWRM	
28	030-143-12	Oil Lifter	1	H-25(A)(T)	Resin	
29	143-193-10	Pan Tapping Screw	2	M5x12	SWRM	
30	030-152-14	Seal Stopper	1	H-25(A)(T)	SPCC	
31	121-001-20	Packing	1	d160.4xd169.4x6.5t(P.C.144)	NBR	*
32	035-128-16	Oil Plug	1	M10x15	Titanium	
33	121-246-11	Packing	1	d10.3xd16x2t	PE	*
34	029-000-88	Oil Casing	1	80PUT22.2/23.7-51/61	Resin	

PARTS LIST		TITANIUM VANCS PUMP			1/13/2020	
ITEM	PART No.	DESCRIPTION	QTY	SIZE	MATERIAL	NOTES
35	140-000-12	Hex.Bolt (w/Plain Washer)	4	M8x45	Titanium	
36	143-000-54	Truss Screw (w/O-Ring)	6	M6x40(P-5,NBR)	Titanium	*
37	021-008-60	Impeller (60Hz)	1	80TM23.7-61	Resin	
	021-008-40	Impeller (50Hz) OPTION	1	80TM23.7-51	Resin	50Hz OPTION
38	142-000-76	Spring Washer	1	M16	Titanium	
39	141-000-14	Hex.Nut	1	M16	Titanium	
40	122-283-13	O-Ring	1	165xd3.1	NBR	*
41	140-000-12	Hex.Bolt (w/Plain Washer)	4	M8x45	Titanium	
42	048-268-19	Screwed Flange	1	80mm(1.5KW)	Resin	
43	121-568-12	Packing	1	d84xd98x5t	NBR	*
44	020-002-34	Pump Casing	1	80TM22.2/3.7-51/61	Resin	
45	141-121-24	Hex.Nut	2	M8(B=12)	Titanium	
46	165-000-07	Rubber Feet	5	PU/PN/PSF21.5-52/62	NBR	
47	023-001-06	Strainer	1	80PN/TM22.2/3.7-51/61	Resin	
48	143-000-11	Truss Tapping Screw	4	M4x18	Titanium	
	173-002-35	Packing O-Ring Set	1Set	(Marked by *)		
9	121-001-22	Packing (Head Cover/Head Cover Spacer)	1	d169xd176x3.1t (P.C.160)	NBR	*
13	121-001-23	Packing (Head Cover Spacer/M.Frame)	1	VK(T)-22/37(A)T(W)	NBR	*
30	121-001-20	Packing (M.Frame/O.Casing)	1	d160.4xd169.4x6.5t(P.C.144)	NBR	*
32	121-246-11	Packing (Oil Plug)	1	d10.3xd16x2t	PE	*
35	122-003-17	O-Ring (O.Casing Bolt)	6	P-5(4.8xd1.9)	NBR	*
39	122-283-13	O-Ring (O.Casing/P.Casing)	1	165xd3.1	NBR	*
42	121-568-12	Packing (Screwed Flange)	1	d84xd98x5t	NBR	*
		Lubricant		Liquid Paraffin VG32 680ml		

PARTS LIST		TITANIUM VANCS PUMP					1/13/2020
ITEM	PART No.	DESCRIPTION	QTY	SIZE	MATERIAL	NOTES	

EXPLODED VIEW

80TM23.7-51/61



C-01285-2